

alles a=4 tenzij anders op tekening aangegeven
LET OP!!! post 12, precisie pijp Ø30 los meeleveren, niet vastlassen

pos	aant	omschrijving	lengte	mat.	massa	onderdeel
14	4	zeskantmoer M30		Staal 8.8	0,3 kg	2400-5001.ipt
13	8	schuine plaat 100 x 6	100	S235	0,2 kg	3050-110.ipt
12	4	precisie pijp 30 x 2.5 (los meeleveren)	49	S235	0,1 kg	2400-117.ipt
11	2	huidplaat d=5	2400	S235	113,1 kg	2400-101.ipt
10	2	gelaserde strip 100 x 12	2360	S235	21,9 kg	2400-103.ipt
9	2	gelaserde plaat d=5		S235	0,6 kg	2400-109.ipt
8	4	gelaserde plaat d=5 mm	241 mm	S235	1,1 kg	3050-167.ipt
7	2	gelaserde plaat d=15	2400	S235	27,2 kg	2400-104.ipt
6	4	gelaserde pl. d= 15	199,6	S235	3 kg	2400-110.ipt
5	4	gelaserde pl. 80 x 15	82	S235	6,4 kg	2400-107.ipt
4	2	KGU 70 mm x 150 mm x 70 mm d=8 mm	2340 mm	S235	38,6 kg	2400-108.ipt
3	2	KGU 70 mm x 150 mm x 70 mm d=8 mm	2340 mm	Staal, Mild	38,6 kg	2400-106.ipt
2	4	KGU 65 x 100 x 30 d=5	2375	S235	16,2 kg	2400-105.ipt
1	6	KGH 100 x 30 d=4	2375	S235	9,2 kg	2400-102.ipt
pos	aant	omschrijving	lengte	mat.	massa	onderdeel

Oprachtgever: **Bouw combinatie Open IJ**

Project: **OpenIJ Sea Lock**

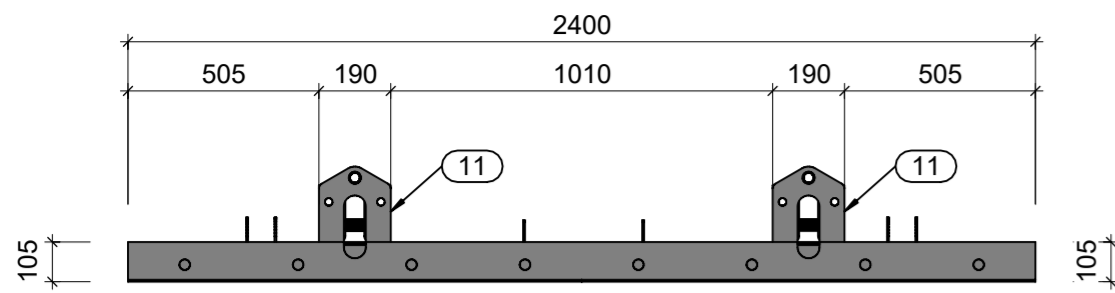
Omschrijving: **wandbekisting type 2400**

Schaal: zie tek.	Opgesteld: MVEE	Paraaf: Datum: 17-2-2015
Formaat: A2	Gecontroleerd:	Paraaf: Datum:
Tekeningnummer: 2400-10	Viagegeven:	Paraaf: Datum:
		Platform: inventor

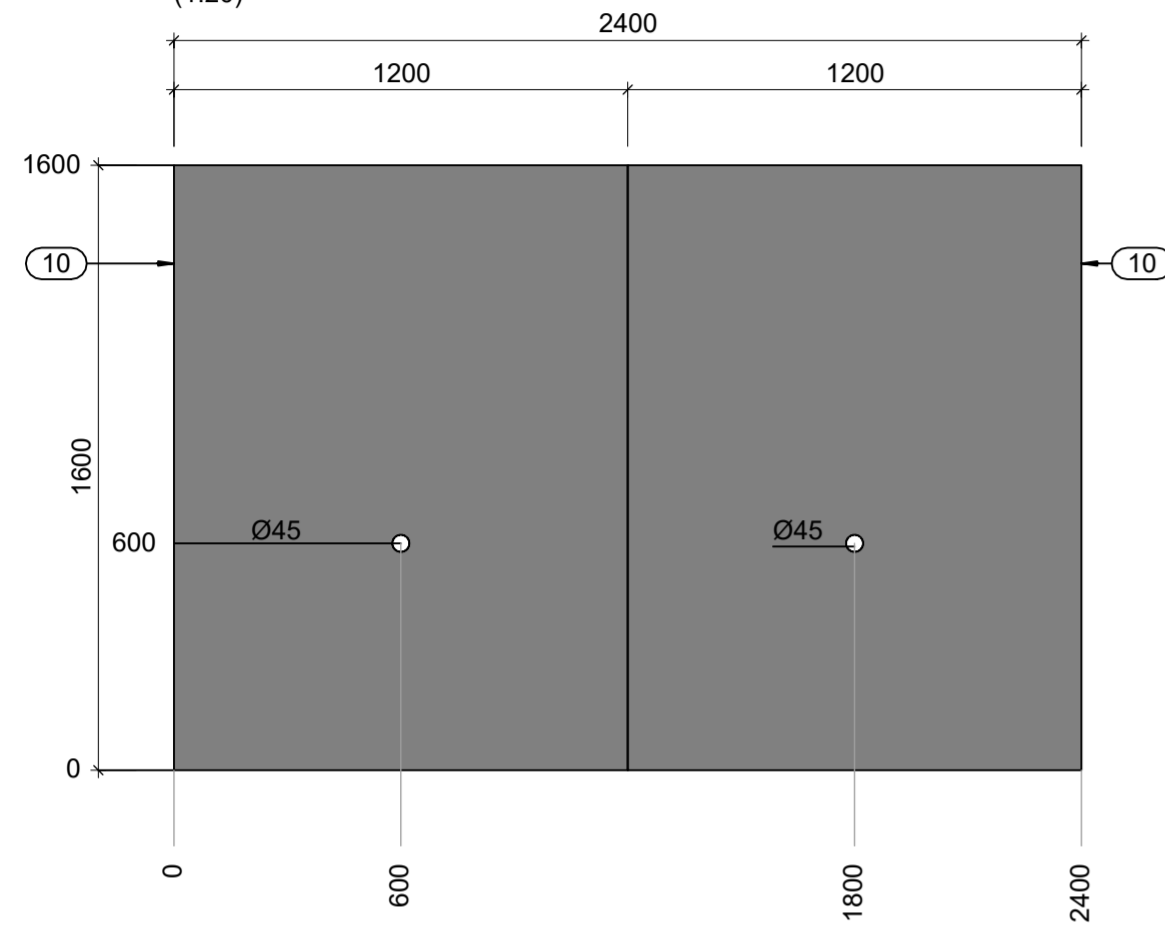
Status: **concept**

Versie: 0.1

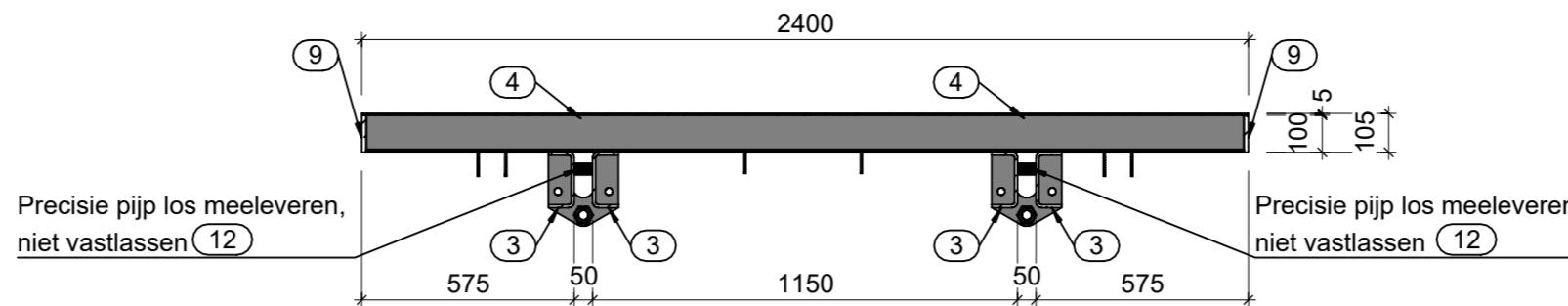
Datum: 19-02-2018



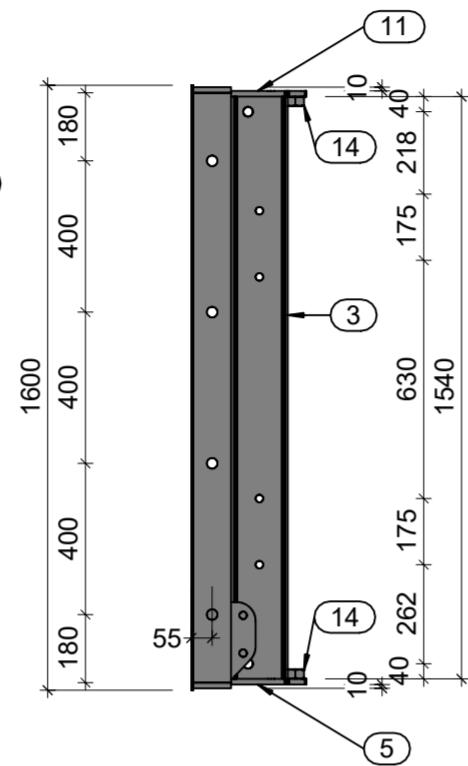
Bovenaanzicht
(1:20)



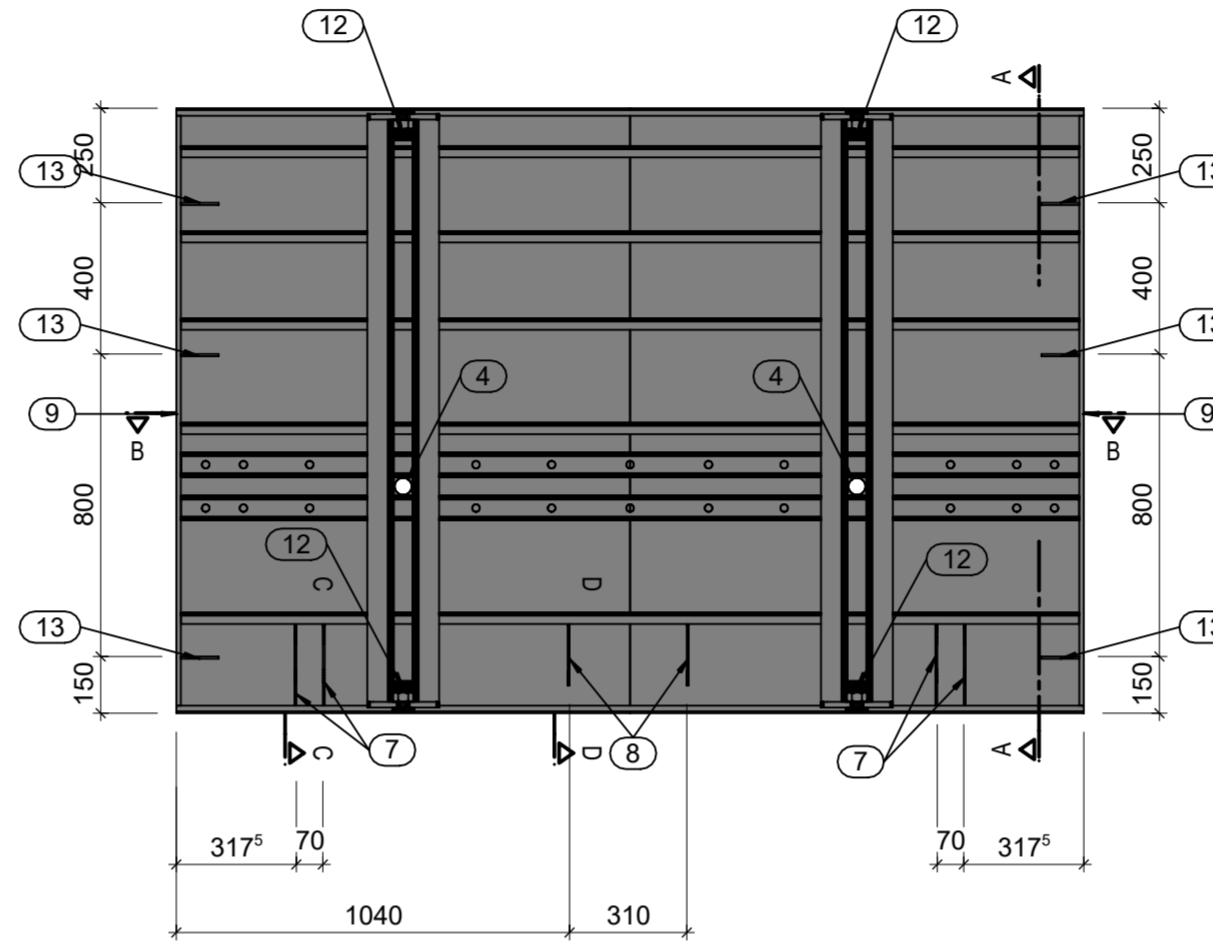
Aanzicht huidplaat
(1:20)



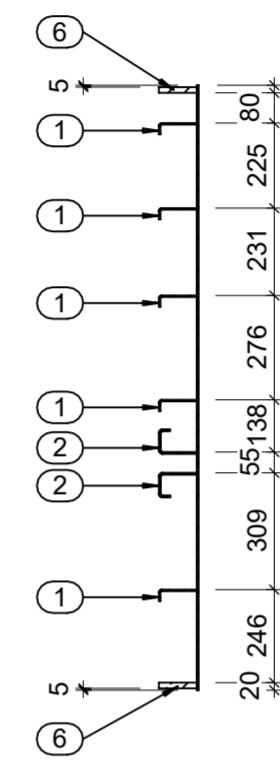
Drsn B-B
(1:20)



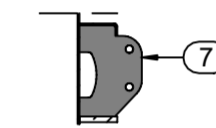
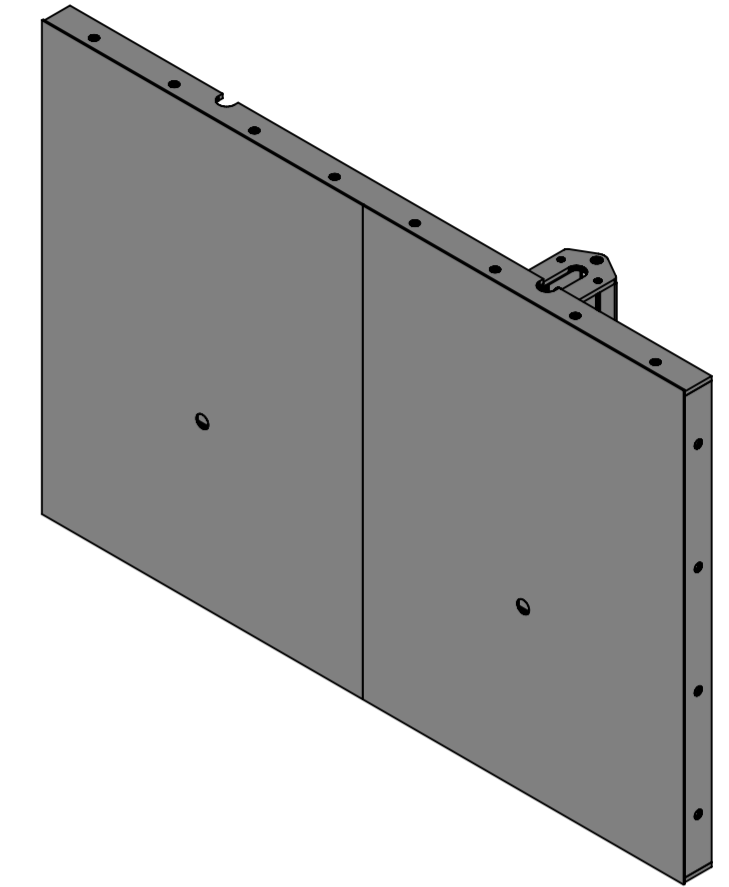
Zijaanzicht
(1:20)



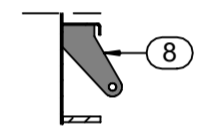
Achteraanzicht
(1:20)



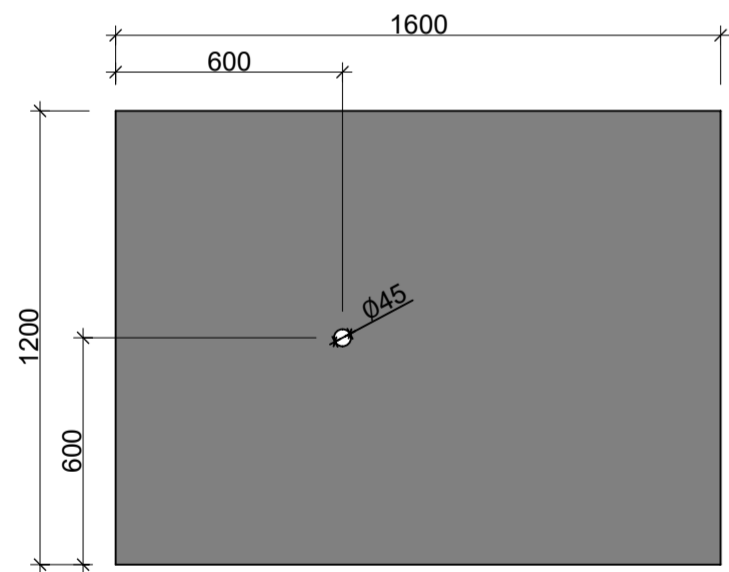
Drsn A-A
(1:20) (Sned 50 mm diep)



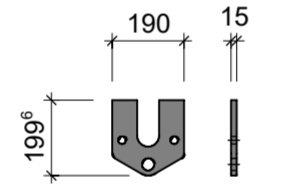
Drsn C-C
(1:20)



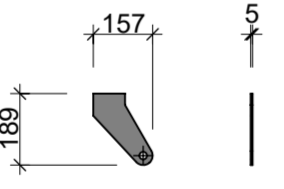
Drsn D-D
(1:20)



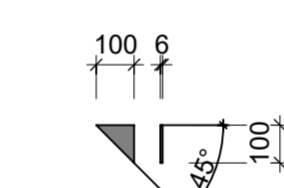
detail: 1600-101.ipt
huidplaat d=5, (1:20)



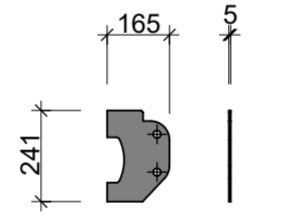
detail: 2400-110.ipt
plaat 150 x 15



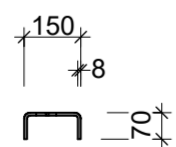
detail: 2400-109.ipt
gelaserde plaat d=5, (1:20)



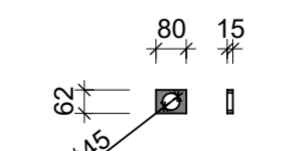
detail: 3050-110.ipt
schuine plaat 100 x 6 (1:20)



detail: 3050-167.ipt
gelaserde plaat d=5 mm (1:20)



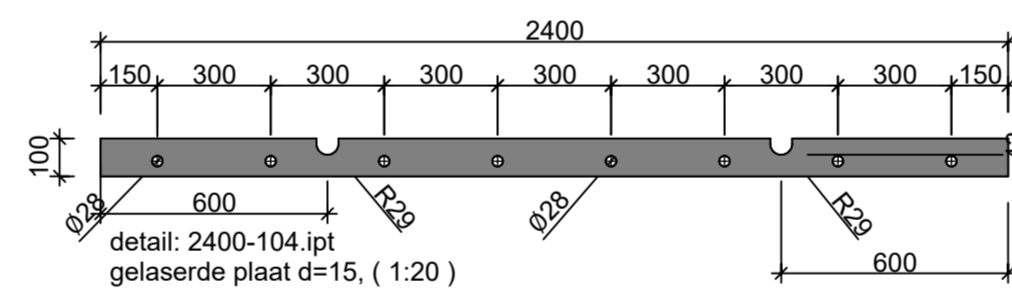
detail: 2400-107.ipt
gelaserde pl. 80 x 15 (1:20)



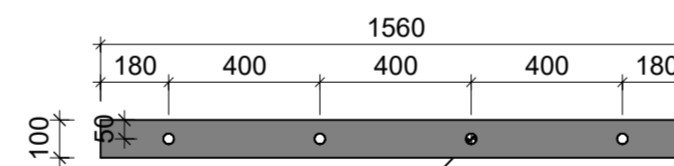
detail: 1600-107.ipt
gelaserde pl. 80 x 15 (1:20)



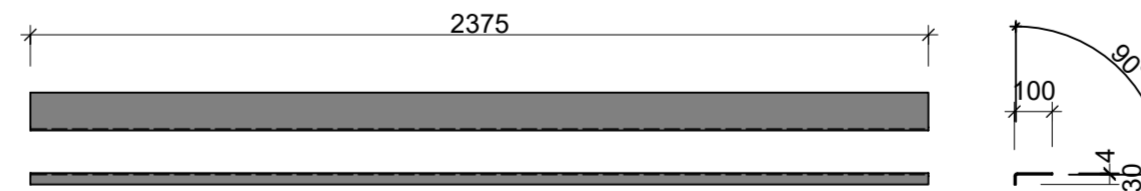
detail: 2400-108.ipt
KGU 70 mm x 150 mm x 70 mm d=8 mm (1:20)
met gtn Ø26/20



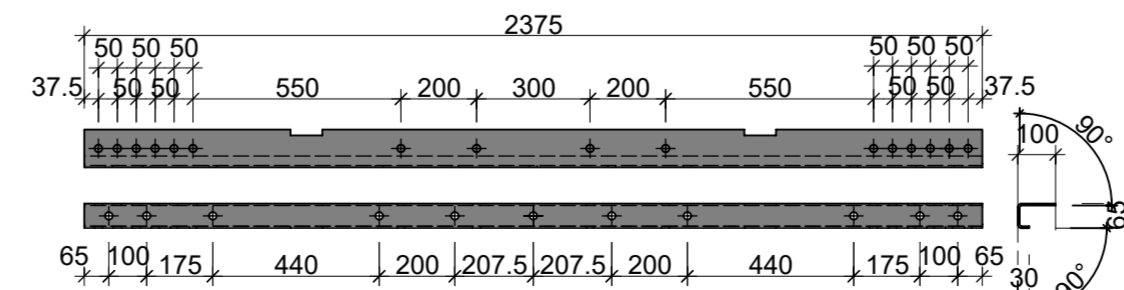
detail: 2400-104.ipt
gelaserde plaat d=15, (1:20)



detail: 1600-103.ipt
gelaserde strip 100, x 12, met gtn Ø28 (1:20)



detail: 2400-102.ipt
KGH 100 x 30 d=4 (1:20)

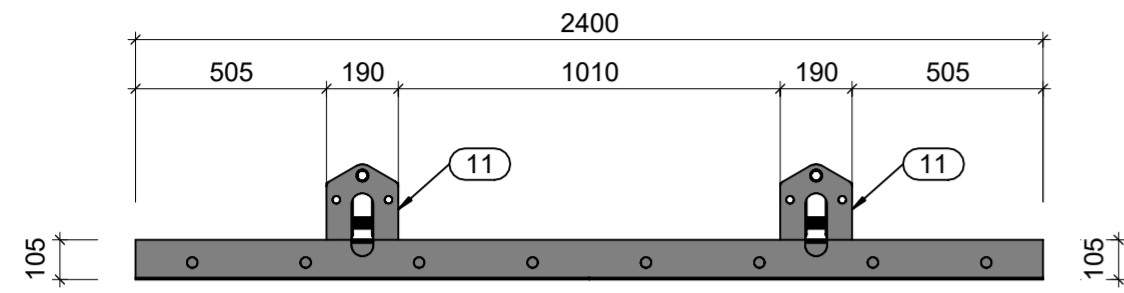


detail: 2400-105.ipt
KGU 65 x 100 x 30 d= 5 (1:20)

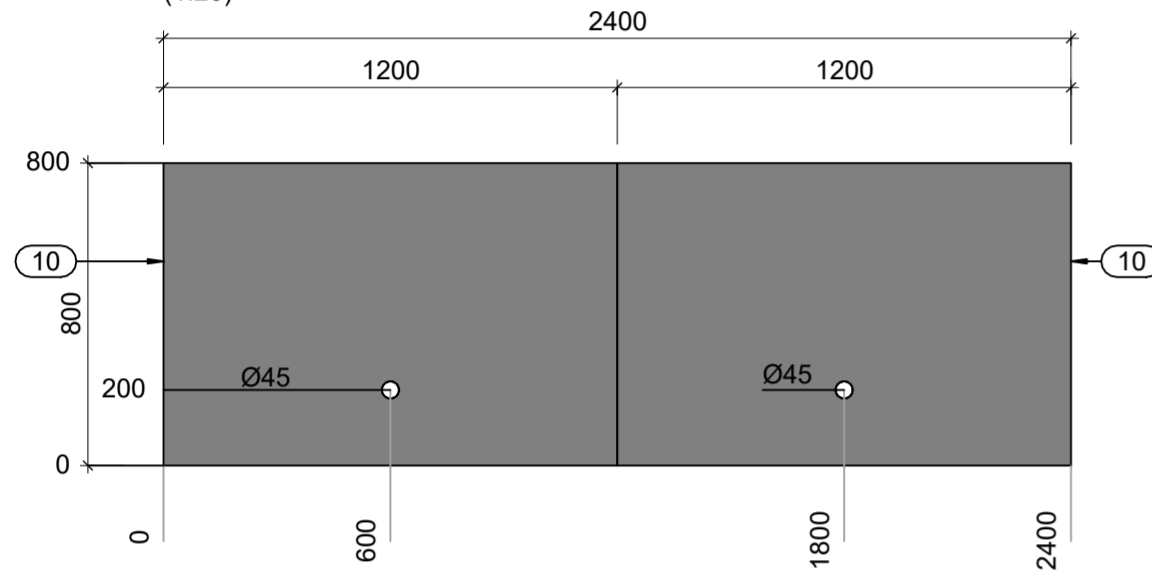
Onderdelen:

pos	aant	omschrijving	lengte	mat.	massa	onderdeel
14	4	zeskantmoer M30		Staal 8.8	0,3 kg	2400-5001.ipt
13	6	schuine plaat 100 x 6	100	S235	0,2 kg	3050-110.ipt
12	4	precisie pijp 30, x 2,5 (Los meeleveren)	49	S235	0,1 kg	2400-117.ipt
11	4	plaat d=15	199,6	S235	3 kg	2400-110.ipt
10	2	huidplaat d=5,	1600	S235	75,4 kg	1600-101.ipt
9	2	gelaserde strip 100, x 12,	1560	S235	14,4 kg	1600-103.ipt
8	2	gelaserde plaat d=5,		S235	0,6 kg	2400-109.ipt
7	4	gelaserde plaat d=5 mm	241 mm	S235	1,1 kg	3050-167.ipt
6	2	gelaserde plaat d=15,	2400,	S235	27,2 kg	2400-104.ipt
5	4	gelaserde pl. 80 x 15	62	S235	0,4 kg	2400-107.ipt
4	2	KGU 70 mm x 150 mm x 70 mm d=8 mm	1540 mm	S235	25,8 kg	1600-108.ipt
3	2	n.v.t.		n.v.t.	n.v.t.	
2	2	KGU 65 x 100 x 30 d= 5	2375	S235	16,2 kg	2400-105.ipt
1	4	KGH 100 x 30 d=4	2375	S235	9,2 kg	2400-102.ipt

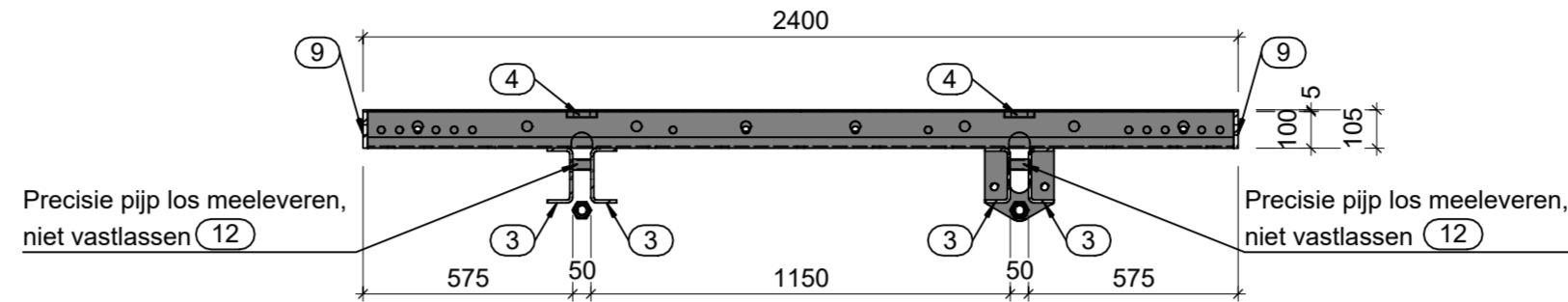
Oprachtgever:	Bouw combinatie Open IJ		
Project:	OpenIJ Sea Lock		
Omschrijving:	Bekisting hoogwaterkering- Productie tekening bekisting Paneel 2400x1600		
TP-code:	Schaal:	Opgesteld:	Paraaf:
	zie tek.	PST	Datum:
Formaat:	Gecontroleerd:	Paraaf:	Datum:
	A2	Vrijgegeven:	Paraaf:
Tekeningnummer:	BAM-KW-H2-TB-3900-01		Datum:
			Platform: Allplan
Status:	Definitief	Versie:	Datum: 21-03-2018
		1.0	



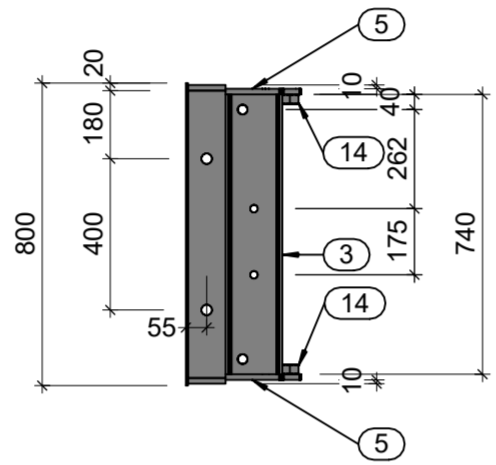
Bovenaanzicht
(1:20)



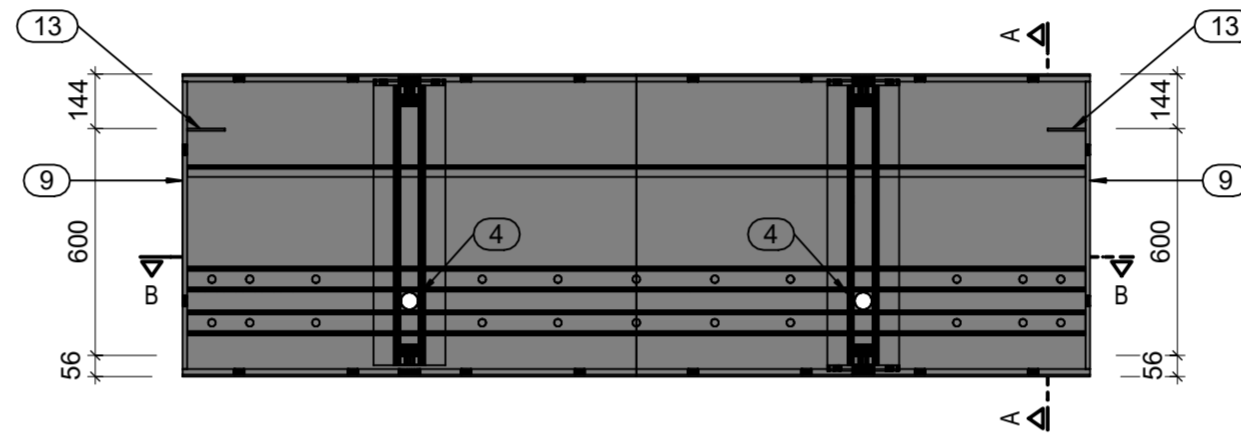
Aanzicht huidplaat
(1:20)



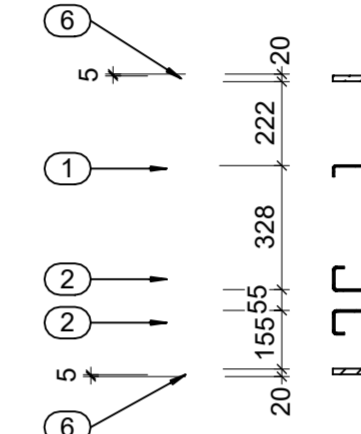
Drsn B-B
(1:20)



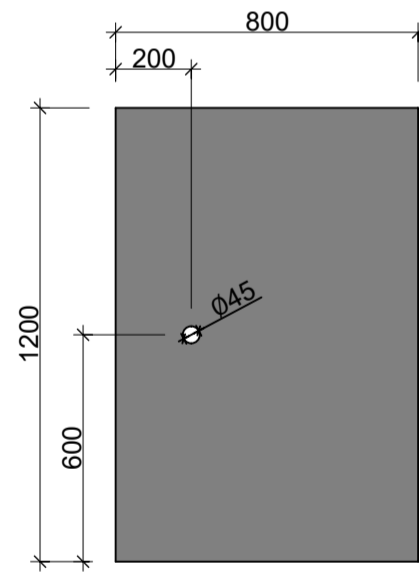
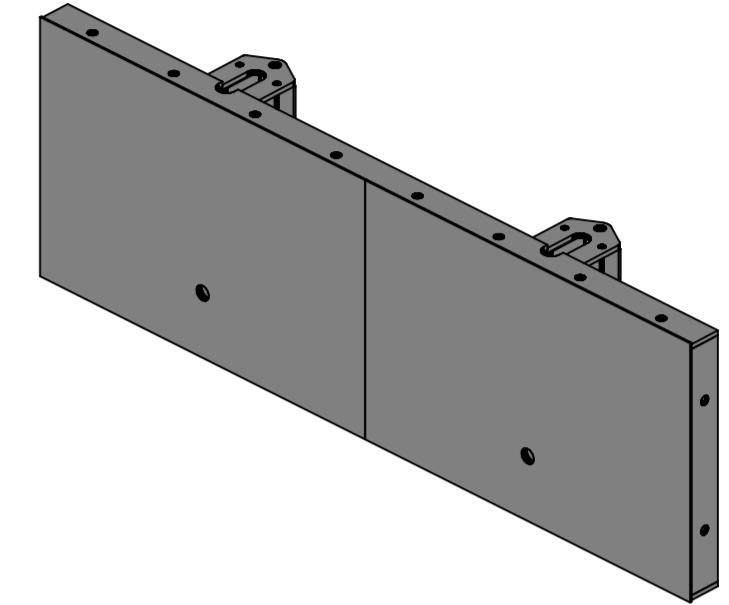
Zijaanzicht
(1:20)



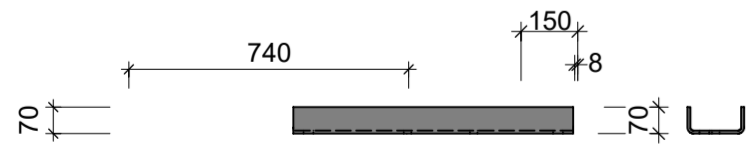
Achteraanzicht
(1:20)



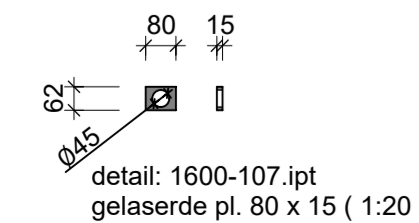
Drsn A-A
(1:20) (Snedes 50 mm diep)



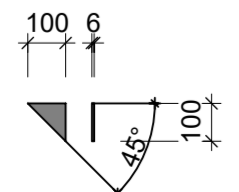
detail: 800-101.ipt
huidplaat d=5, (1:20)



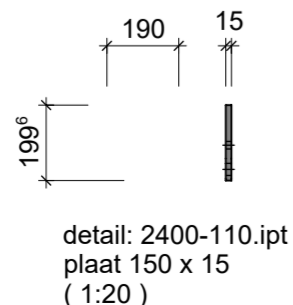
detail: 800-108.ipt
KGU 70 mm x 150 mm x 70 mm d=8 mm (1:20)
met gtn Ø20



detail: 1600-107.ipt
gelaserde pl. 80 x 15 (1:20)

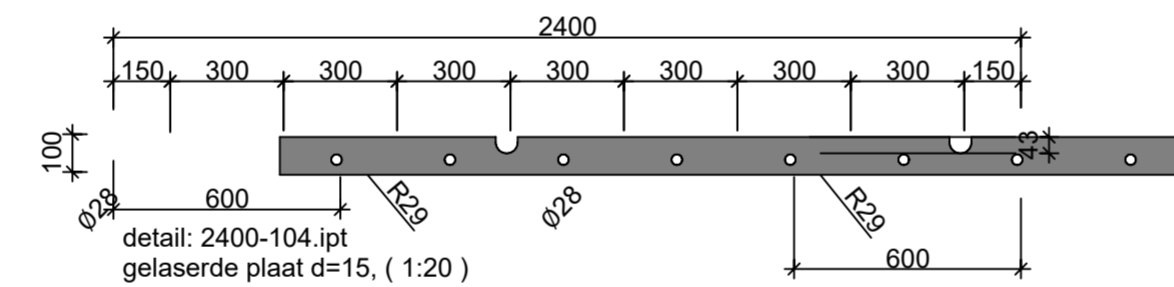


detail: 3050-110.ipt
schuine plaat 100 x 6 (1:20)

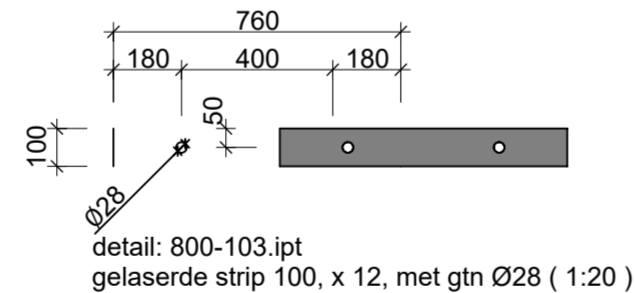


detail: 2400-110.ipt
plaat 150 x 15
(1:20)

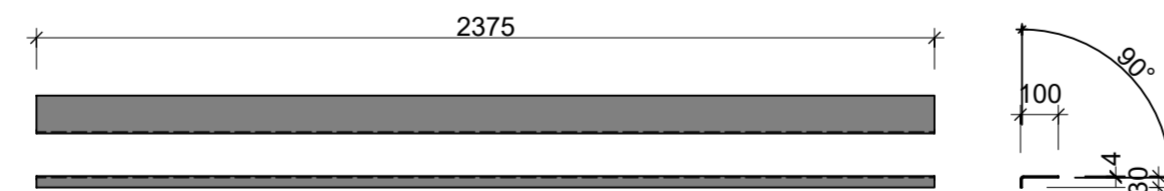
Onderdelen:



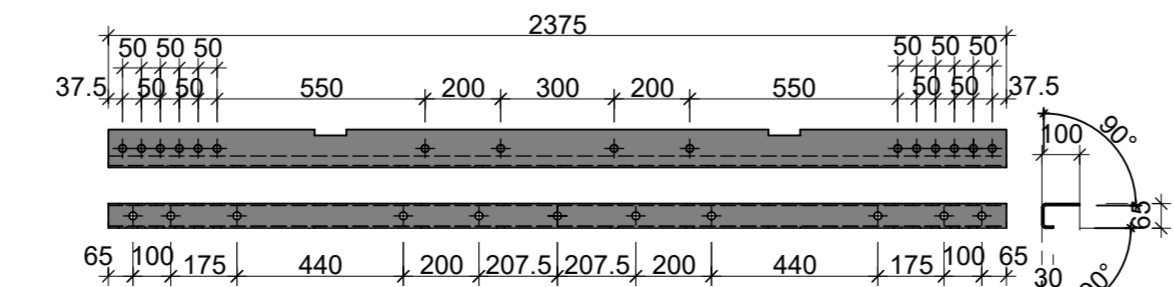
detail: 2400-104.ipt
gelaserde plaat d=15, (1:20)



detail: 800-103.ipt
gelaserde strip 100, x 12, met gtn Ø28 (1:20)



detail: 2400-102.ipt
KGH 100 x 30 d=4 (1:20)



detail: 2400-105.ipt
KGU 65 x 100 x 30 d=5 (1:20)

pos	aant	omschrijving	lengte	mat.	massa	onderdeel
14	4	zeskantmoer M30		Staal 8.8	0,3 kg	2400-5001.ipt
13	2	schuine plaat 100 x 6	100	S235	0,2 kg	3050-110.ipt
12	4	precisie pijp 30, x 2,5 (Los meeleveren)	49	S235	0,1 kg	2400-117.ipt
11	4	plaat d=15	199.6	S235	3 kg	2400-110.ipt
10	2	huidplaat d=5,	800	S235	37,7 kg	1600-101.ipt
9	2	gelaserde strip 100, x 12,	760	S235	7,0 kg	1600-103.ipt
8		n.v.t.	n.v.t.	n.v.t.	n.v.t.	n.v.t.
7		n.v.t.	n.v.t.	n.v.t.	n.v.t.	n.v.t.
6	2	gelaserde plaat d=15,	2400,	S235	27,2 kg	2400-104.ipt
5	4	gelaserde pl. 80 x 15	62	S235	0,4 kg	2400-107.ipt
4	2	KGU 70 mm x 150 mm x 70 mm d=8 mm	740	S235	12,2 kg	1600-108.ipt
3	2	n.v.t.	n.v.t.	n.v.t.	n.v.t.	n.v.t.
2	2	KGU 65 x 100 x 30 d= 5	2375	S235	16,2 kg	2400-105.ipt
1	1	KGH 100 x 30 d=4	2375	S235	9,2 kg	2400-102.ipt

Opdrachtgever:	Bouw combinatie Open IJ		
Project:	OpenIJ Sea Lock		
Omschrijving:	Bekisting hoogwaterkering- Productie tekening bekisting Paneel 2400x800		
TP-code:	Schaal:	Opgesteld:	Paraaf:
	zie tek.	PST	Datum:
Formaat:	Gecontroleerd:	Paraaf:	Datum:
	A2	Vrijgegeven:	Paraaf:
Tekeningnummer:	BAM-KW-H2-TB-3900-02		Datum:
			Platform: Allplan
Status:	Definitief	Versie:	Datum: 21-03-2018
		1.0	