

Paslode® DUO-FAST®

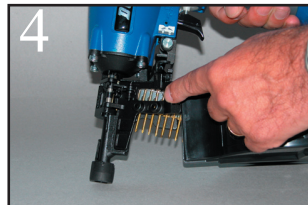
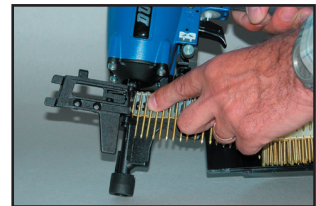
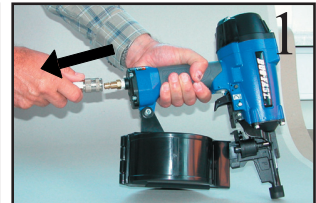
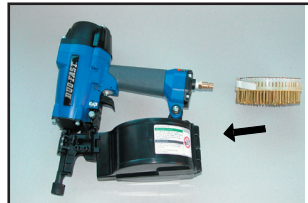
Technical documentations
Technische unterlagen
Documentation de Technique

CNP-65

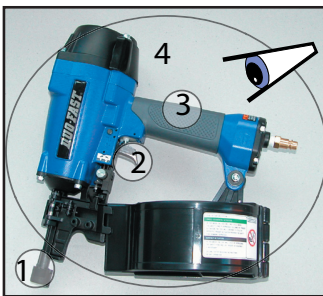


Operating Manual

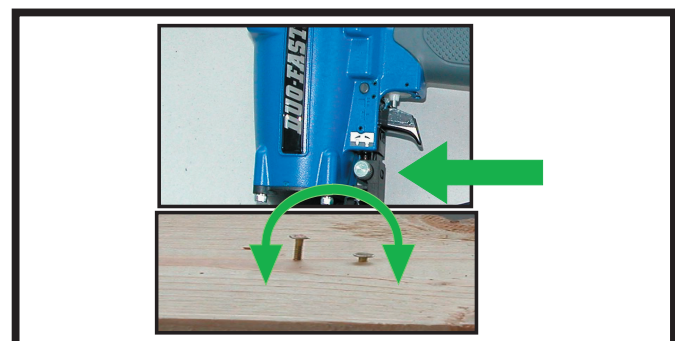
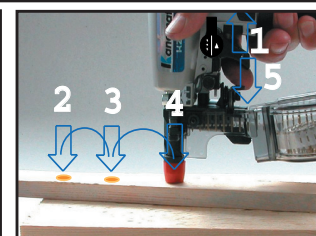
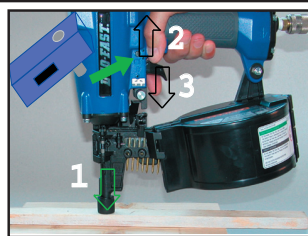
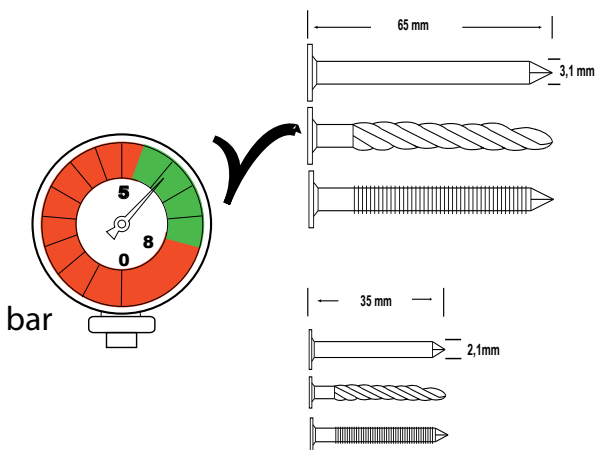
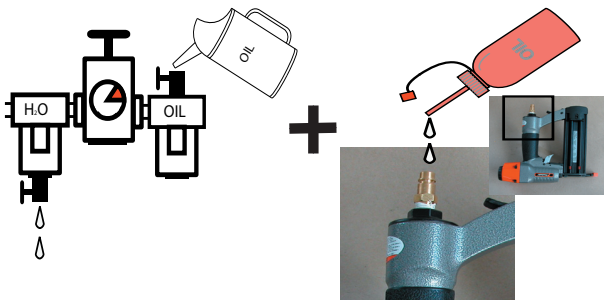
Duo-Fast CNP-65



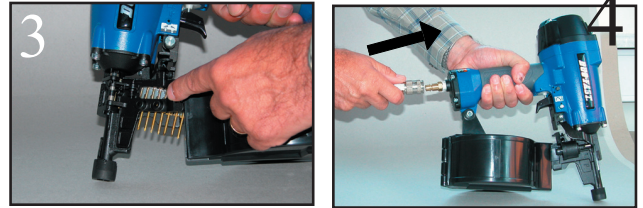
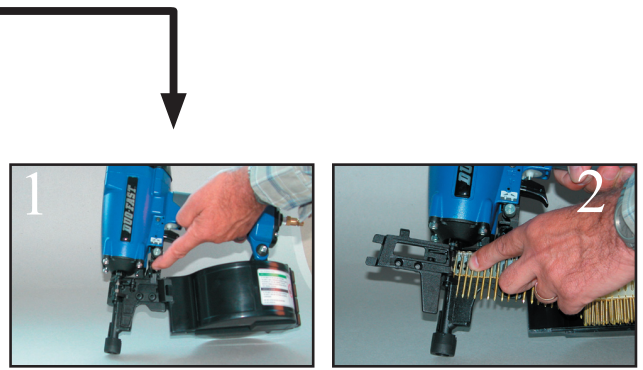
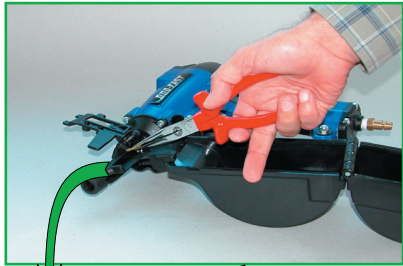
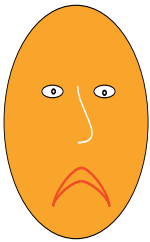
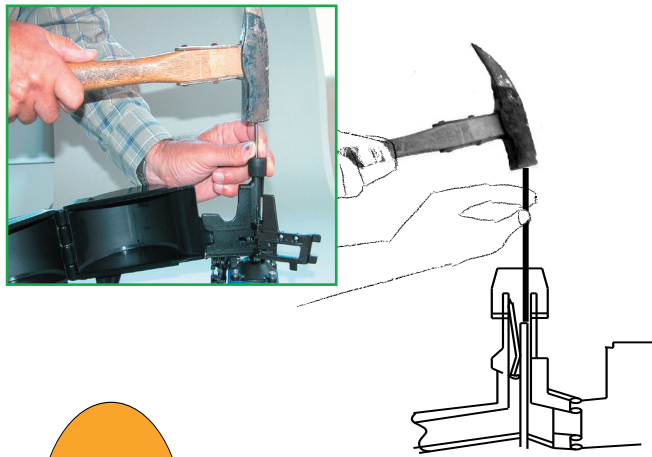
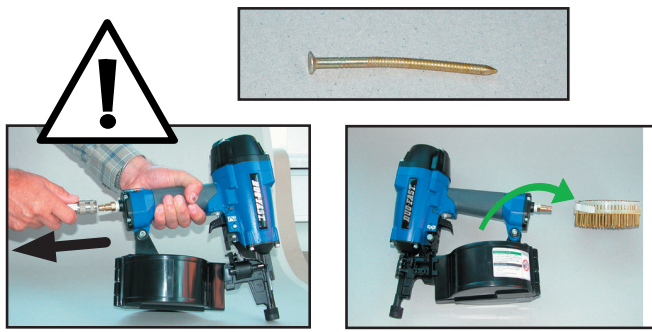
Daily Maintenance



- Check for
1. Smooth safety yoke movement
 2. Trigger movement
 3. Excessively worn or cracked handle
 4. All screws and bolts are tight



Clearing a Jam



GB	Declaration of conformity
D	Konformitätserklärung
F	Déclaration de Conformité
E	Declaración de Conformidad
I	Dichiarazione de Conformità
NL	Konformiteitsverklaring
DK	Overensstemmelseserklæring
S	Konformitetsdeklaration
SF	Vaatimksenmukaisuusvakuutus
N	Samsvarserklæring

ITW Construction Products

GB	We declare that this product is in conformity with the following standards or other normative documents.
D	Wir erklären dass dieses Produkt mit den folgenden Normen oder normativen Dokumenten übereinstimmt.
F	Nous déclarons que ce produit est conforme aux normes ou autres documents normatifs.
E	Nosotros declaramos que este producto está en conformidad con los siguientes estandares u otras Normas de documentación.
I	Noi dichiariamo che questo prodotto è conforme alle norme o ad altri documenti normativi.
NL	Wij verklaren dat dit produkt conform de volgende standaarden of andere norm stellingen is.
DK	Erklærer herved, at produktet er i overensstemmelse med nedenstående normer eller normative dokumenter.
S	Deklarerar att denna produkt är i konformitet med följande standard eller andra normativa dokument.
SF	Vahvistaa etta tämä tuote Paineilmanlain on seuraavien tai normidokumentien mukainen.
N	Vi erklærer at dette produkt samsvarer med følgende standarder eller normer.

EN 292 – 1/2 1991 EN 792-13 : 2000

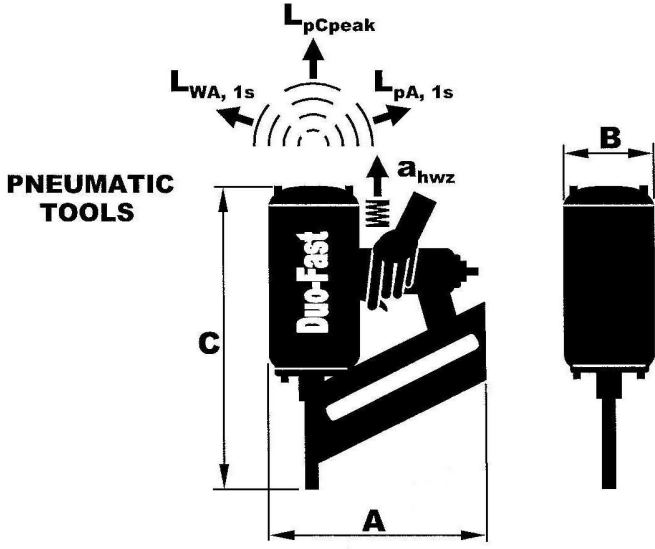
GB	following the provision of EEC Directives.
D	gemäss den Bestimmungen der EWG Richtlinien
F	conformément aux dispositions des EEC Directives.
E	siguiendo las provisiones de los directivos de EEC
I	in conformita alle disposizioni delle Directive CEE
NL	volgens de richtlijnen van de EEC
DK	i henhold til bestemmelserne i EU-direktiverne.
S	som följer bestämmelserna i EU-direktiven
SF	naid EEC direktiivien maaraysten mukaan.
N	som følger bestemmelser i EU-direktiv.

98/37/EEC – 06 /1998 (89/392/EEC – 07/1993)

ITW Constructions Products
Woodfastener R&D Center

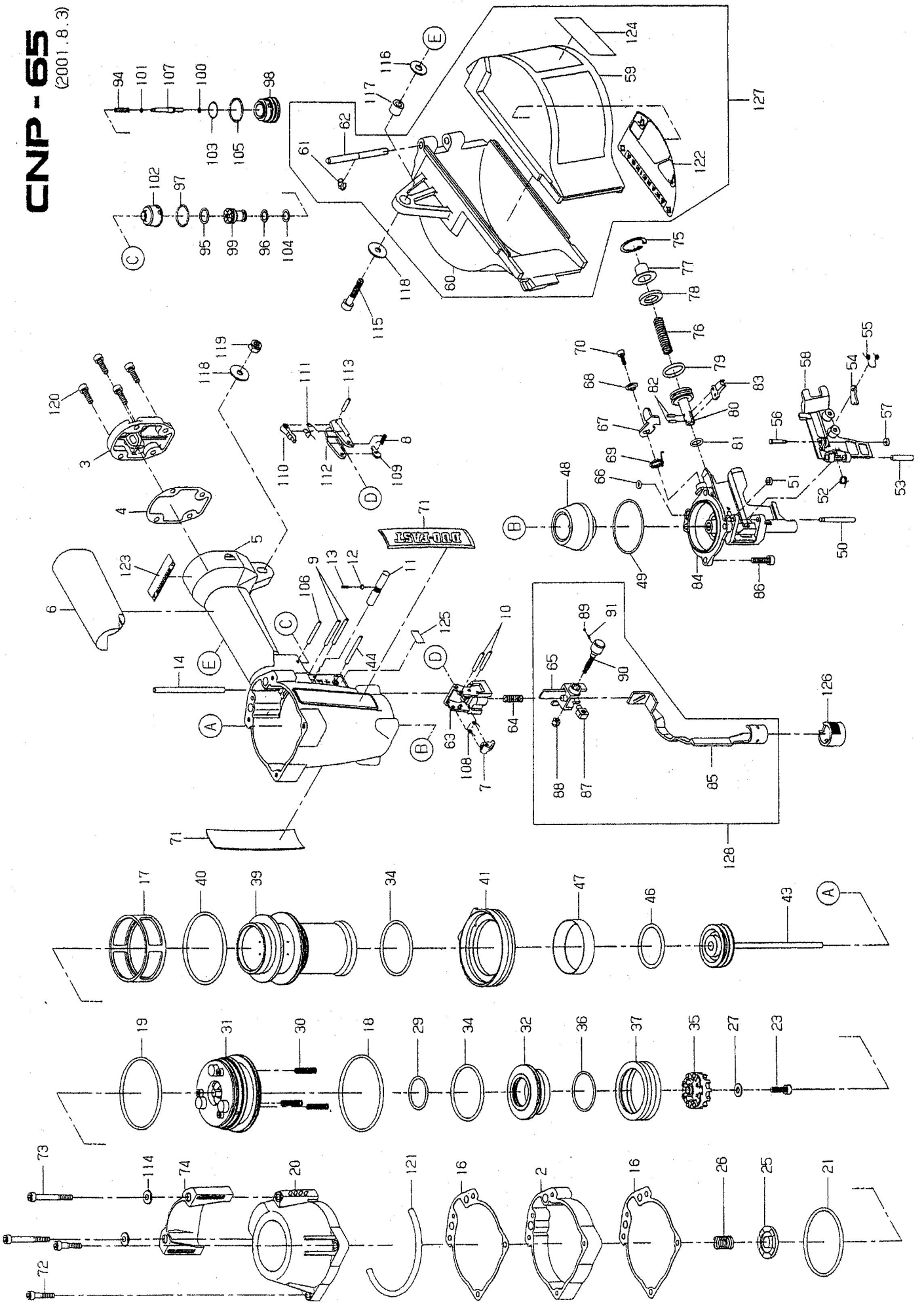
Ole Hansen

Technical Specifications / Technische Daten / Spécifications Techniques

								Normative Documents Normative Dokumente Documents Normatifs			
								Noise values Schallwerte Valeurs du son		Vibration value Vibrationswerte Valeur de vibration	
Product Produkt Produit	Part no Arti, nr No de Art	mm ØxL	kg.	mm A/B/C	ltr.	bar	Quantity Menge Quantité			db	m/s ²
		Fastener specification Befestiger Spezifikation Spécification des moyeux de fixation	Tool Weight Gerätegewicht Poids	Size Abmessungen Spécification	Air consumption Luftverbrauch Consommation d'air	Operating pressure Betriebsdruck Pression d'opération	Load capacity Ladekapazität Capacité du magasin				
CNP 65	391429	Ø 2.1- 3.1 L= 35 - 65	2.1	313 / 297	2.1	5 - 8	⇐ 325	97.5	84.4	90.8	5.59

CNP-65

(2001.8.3)



NO.	PARTS NO.	DESCRIPTION	Q'TY	NO.	PARTS NO.	DESCRIPTION	Q'TY	NO.	PARTS NO.	DESCRIPTION	Q'TY
1				46	MB-100-3	O-RING	1	91			
2	ME-610-6-62	POWER PACK	1	47	ME-610-10	CYLINDER WASHER	1	92			
3	ME-110-2EX-70 (CNP)	REAR CAP	1	48	MB-110-5	BUMPER	1	93			
4	ME-110-6	GASKET	1	49	ME-100-11	O-RING	1	94	ME-113-5	SPRING	1
5	ME-110-1A-62 (CNP)	HANDLE	1	50	MB-140-6	GATE PIN	1	95	MB-100-10	O-RING	1
6	ME-110-50	GRIP RUBBER	1	51	KR-106-5	URETHANE WASHER	1	96	MB-100-14	O-RING	1
7	ME-212-5	CAM	1	52	MB-140-9	SPRING	1	97	KDN-100-8	O-RING	1
8	ME-112-7	TORSION SPRING	1	53	MB-140-7	GATE SPACER	1	98	ME-113-1	VALVE HOUSING	1
9	ME-101-1	SPRING PIN	2	54	MB-140-4	BACK UP TIP	1	99	ME-113-2	VALVE STEM	1
10	ME-101-2	STRAIGHT PIN	2	55	MB-140-3	TORSION SPRING	1	100	ME-100-13	O-RING	1
11	ME-112-4	SWITCH ROD	1	56	MB-140-5	BACK UP PIN	1	101	ME-100-10	O-RING	1
12	ME-112-13	STEEL BALL	1	57	KR-106-4	URETHANE WASHER	1	102	ME-113-3	VALVE COVER	1
13	ME-112-11	SPRING	1	58	ME-840-2A	GATE	1	103	MB-100-7	O-RING	1
14	ME-110-7	PIPE	1	59	ME-830-2	MAGAZINE DOOR	1	104	MB-100-12	O-RING	1
15				60	ME-830-1	MAGAZINE	1	105	ME-100-7	O-RING	1
16	ME-220-5	GASKET	2	61	KDN-104-3	E-RING	1	106	MB-101-1	SPRING PIN	1
17	ME-210-8	CYLINDER STAY	1	62	MB-230-3	HINGE PIN	1	107	ME-113-4	VALVE PIN	1
18	ME-100-4	O-RING	1	63	ME-212-1	TRIGGER BASE	1	108	ME-112-8	TORSION SPRING	1
19	ME-100-3	O-RING	1	64	ME-140-8	SPRING	1	109	ME-112-6A	STOPPER PLATE	1
20	ME-120-1A-70 (CNP)	CAP	1	65	ME-347-1	UPPER YOKE	1	110	ME-212-3A	TRIP LEVER	1
21	ME-100-2	O-RING	1	66	KDN-100-7	O-RING	1	111	ME-112-9	TORSION SPRING	1
22				67	MB-141-1	LATCH	1	112	ME-212-2	TRIGGER	1
23	ME-103-1	SCREW	1	68	KDN-140-9A	BUSH	1	113	KDN-101-4	SPRING PIN	1
24				69	SA-140-8	SPRING	1	114	ME-220-10	GUIDE WASHER	2
25	ME-120-6P1	RETURN VALVE ASS'Y	1	70	KDN-103-7	SCREW	1	115	KDN-203-2	SCREW	1
26	ME-120-7	SPRING	1	71	95105516	HOUSING BUMPER	2	116	MA-106-2	WASHER	1
27	ME-106-1	WASHER	1	72	ME-603-1	SCREW	2	117	KDN-130-4	SPACER	1
28				73	ME-603-2A	SCREW	2	118	KDN-130-5	WASHER	2
29	ME-100-6	O-RING	1	74	ME-220-9AEX (CNP)	CAP COVER	1	119	3130J	NUT	1
30	ME-120-8	SPRING	3	75	MA-104-1	O-RING	1	120	MA-103-5	SCREW	4
31	ME-220-3AP1	CAP CYLINDER ASS'Y	1	76	MB-143-6	SPRING	1	121	ME-100-12	O-RING CUSHION	1
32	ME-220-2A	POPPET	1	77	MA-143-1	FEED COVER	1	122	KNP-108-2	PRODUCT LABEL	1
33				78	MB-143-7	FEED CUSHION	1	123	XH-108-75	WARNING LABEL	1
34	ME-100-5	O-RING	2	79	MA-100-10	O-RING	1	124	XH-108-30	STANDARD CYCLE LABEL	1
35	ME-220-4P1	EXHAUST SEAL ASS'Y	1	80	MB-143-3	FEED PISTON	1	125		HANDLE LABEL	1
36	KDN-100-17	O-RING	1	81	KDN-100-10	O-RING	1	126	ME-549-2	YOKE	1
37	ME-210-6	CYLINDER SEAL	1	82	JDE-101-1	STRAIGHT PIN	2	127	ME-530EX	MAGAZINE ASS'Y	1
38				83	MB-143-4B	FEED TIP PIN	1	128	ME-847P1 (ONP)	LOWER YOKE ASS'Y	1
39	ME-610-4	CYLINDER	1	84	ME-840-1	NOSE	1				
40	JCN-100-3	O-RING	1	85	ME-847-2	LOWER YOKE	1				
41	ME-110-3P1	CYLINDER RING ASS'Y	1	86	KT-103-7	SCREW	4				
42				87	ME-247-4A	ADJUST PIN	1				
43	ME-815EX	PISTON BLADE ASS'Y	1	88	KDN-805-1	NUT	1				
44	ME-101-3	SPRING PIN	1	89	ME-247-5	STEEL BALL	1				
45				90	ME-247-3	ADJUSTER	1				

Paslode Duo-Fast service center



Document number. T391429-0